



Using an OpenEdge10 Database as an Enterprise Architect Model Repository

Configuration Guide

Author: Phillip Magnay
Version: 1.0
Last Updated: 5/7/2010
Revision History:

Date	Revision	Developer	Summary of Changes
10/30/05	Initial	Phillip Magnay	Initial Draft
11/15/05	1.0	Phillip Magnay	Update for EA 6.0 release

TABLE OF CONTENTS

1	Configuring an OpenEdge Database for Enterprise Architect.....	3
1.1	Unzipping the Example Files	3
1.2	Starting and Shutting Down the OpenEdge Database.....	3
1.3	Configuring the ODBC Data Source for the OpenEdge Database	4

1 Configuring an OpenEdge Database for Enterprise Architect

1.1 Unzipping the Example Files

Unzip the **OpenEdgeUML.zip** to the root directory of the C: drive.

Confirm that the path to the OpenEdgeBase database is **C:\OpenEdgeUML\db\OEBase\oebase.db**.

Confirm that the path to the OpenEdgeExample is **C:\OpenEdgeUML\db\OEExample\oeexample.db**

Similarly, confirm that the directory containing the database startup and shutdown batch scripts is **C:\OpenEdgeUML\bin**. Shortcuts to these batch scripts are also included in this sub-directory.

(These locations may be changed from their default but remember to update the .st file and use prostrct repair on the databases as well as update the database references in the startup and shutdown batch scripts.)

1.2 Starting and Shutting Down the OpenEdge Database

Follow these steps:

- a) Update the DLC environment variable (Currently set to C:\OpenEdge100B) in the startup and shutdown batch scripts (StartOEBase.bat and StopOEBase.bat respectively) to your local install of OpenEdge 10.0B.
- b) Optionally, change the -S startup parameter for the oebase.db database to an available port number/service name. (Currently, set to 32000)
- c) The -L startup parameter is currently set to 32000. A large -L parameter setting is necessary when importing/transferring large amounts of data into the EA repository. If these operations are not required then the -L parameter setting can be removed or reduced.
- d) Confirm that the oebase.db database can be started and shut down using these scripts.
- e) Start the oebase.db database

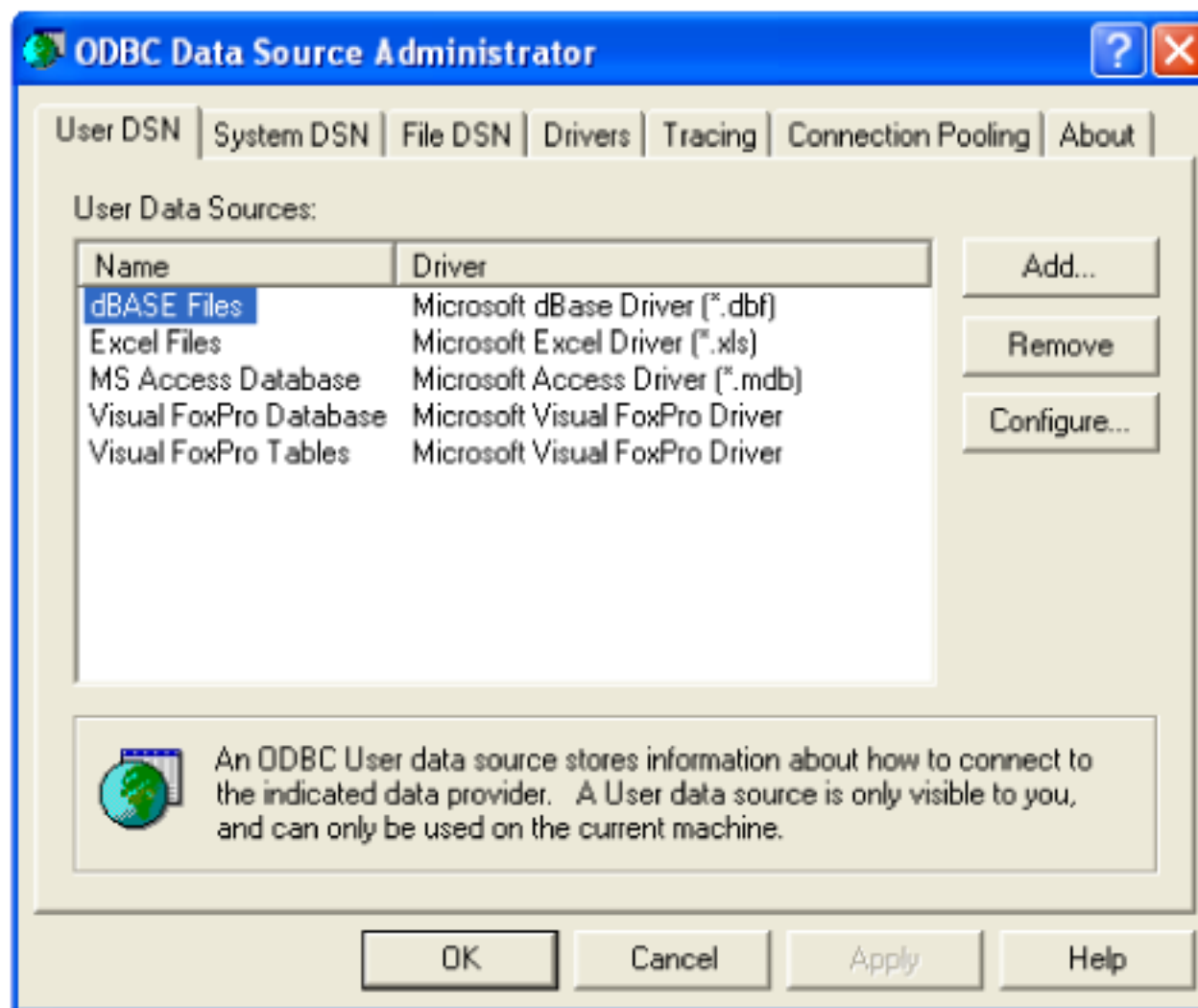
Repeat the above steps for the oeexample.db database remembering to select a different the -S port number setting.

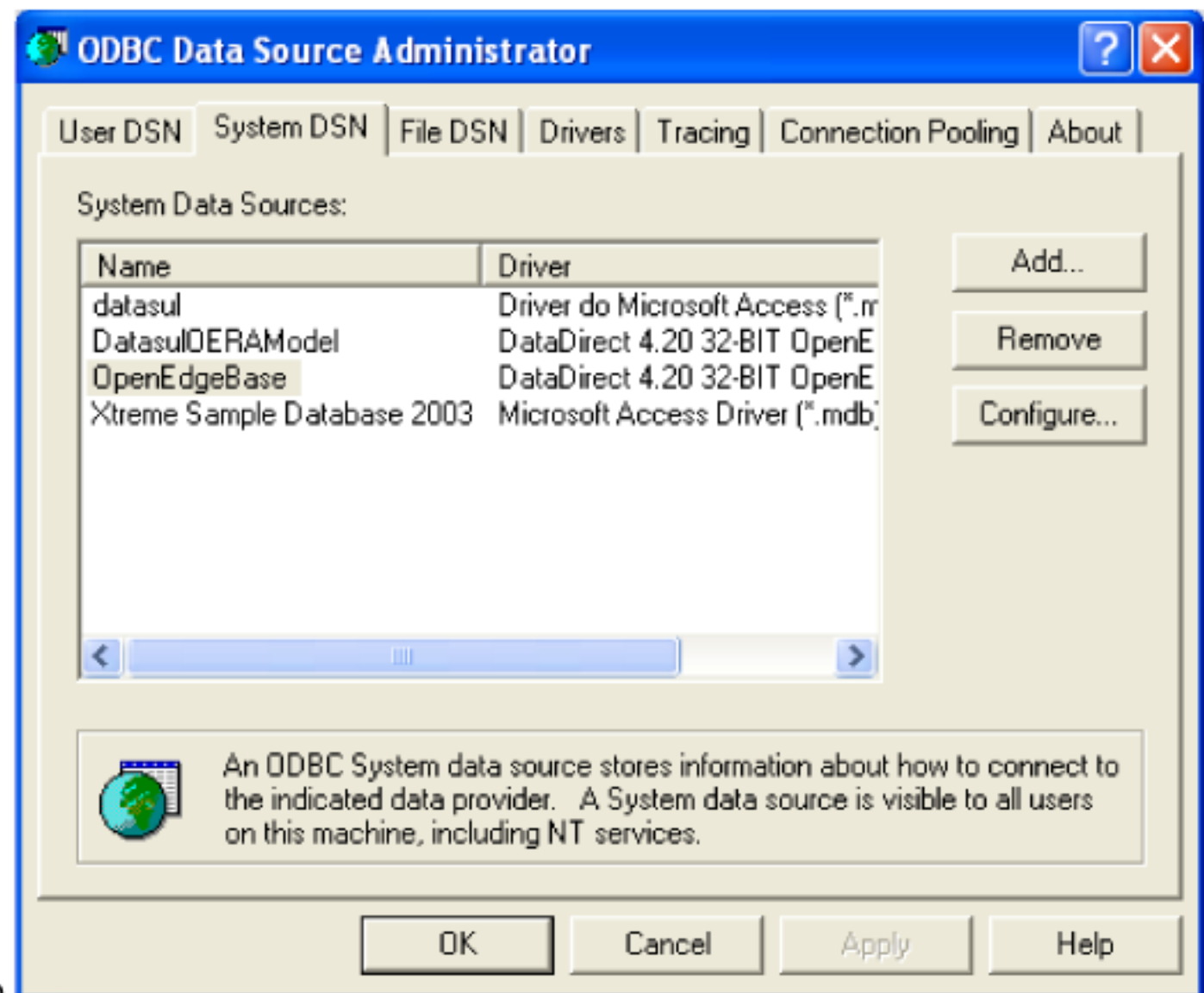
Confirm that the oebase and oeexample databases start and shutdown correctly using these batch scripts and their respective shortcuts.

1.3 Configuring the ODBC Data Source for the OpenEdge Database

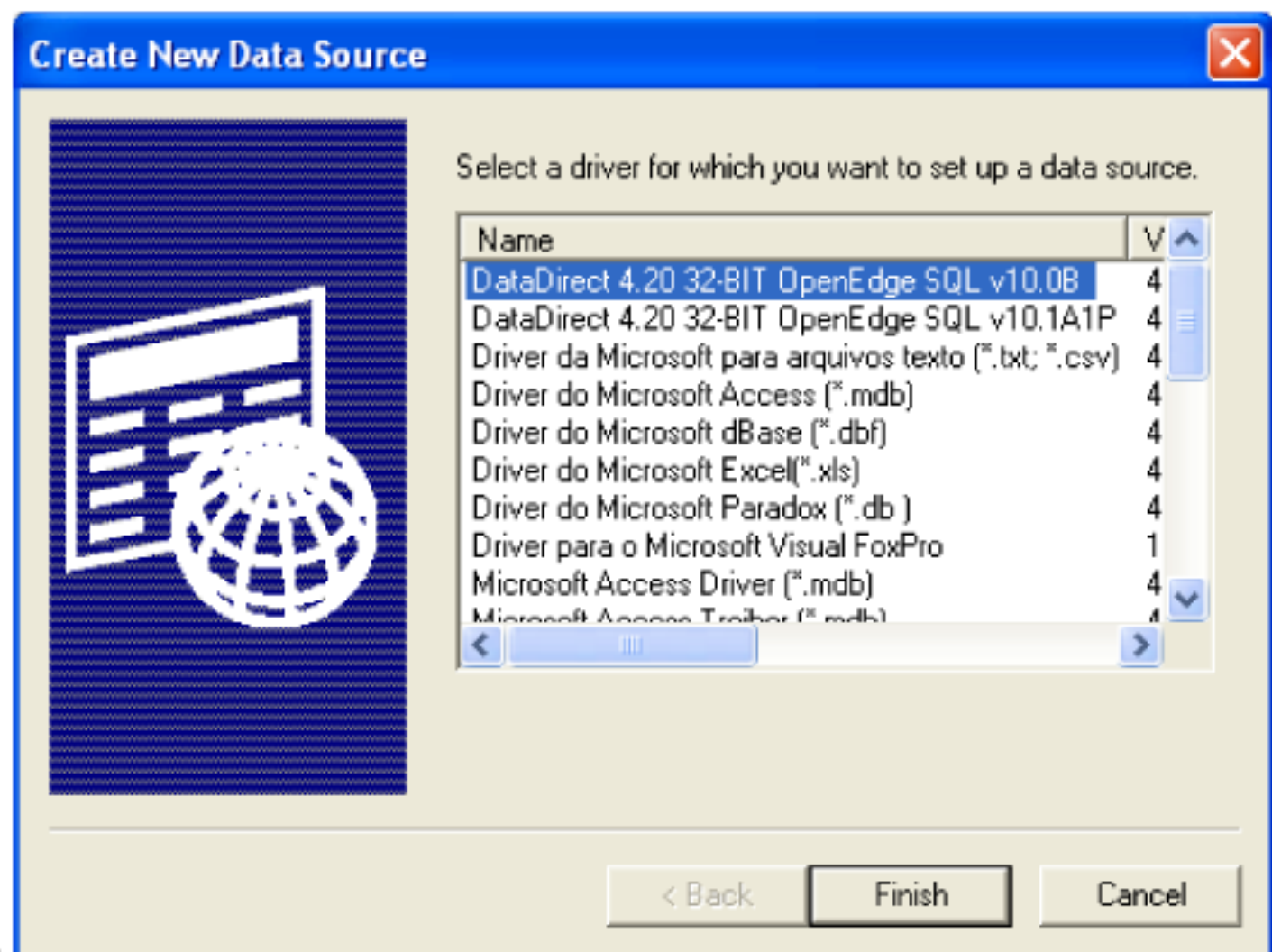
Configuring the ODBC Data Source for the OpenEdge Database

1. Go to **Start -> Settings -> Control Panel**
2. Select **Administrative Tools**
3. Select **Data Sources (ODBC)**





1. Select **System DSN** tab



2. Select **Add...** button

3. Select **DataDirect 4.20 32-BIT OpenEdge SQL v10.0B** (**NB. Presently the configuration has been tested and working with the DataDirect driver that is shipped with OpenEdge 10.0B. Testing is work in progress with the driver that is shipped with OpenEdge 10.1A)

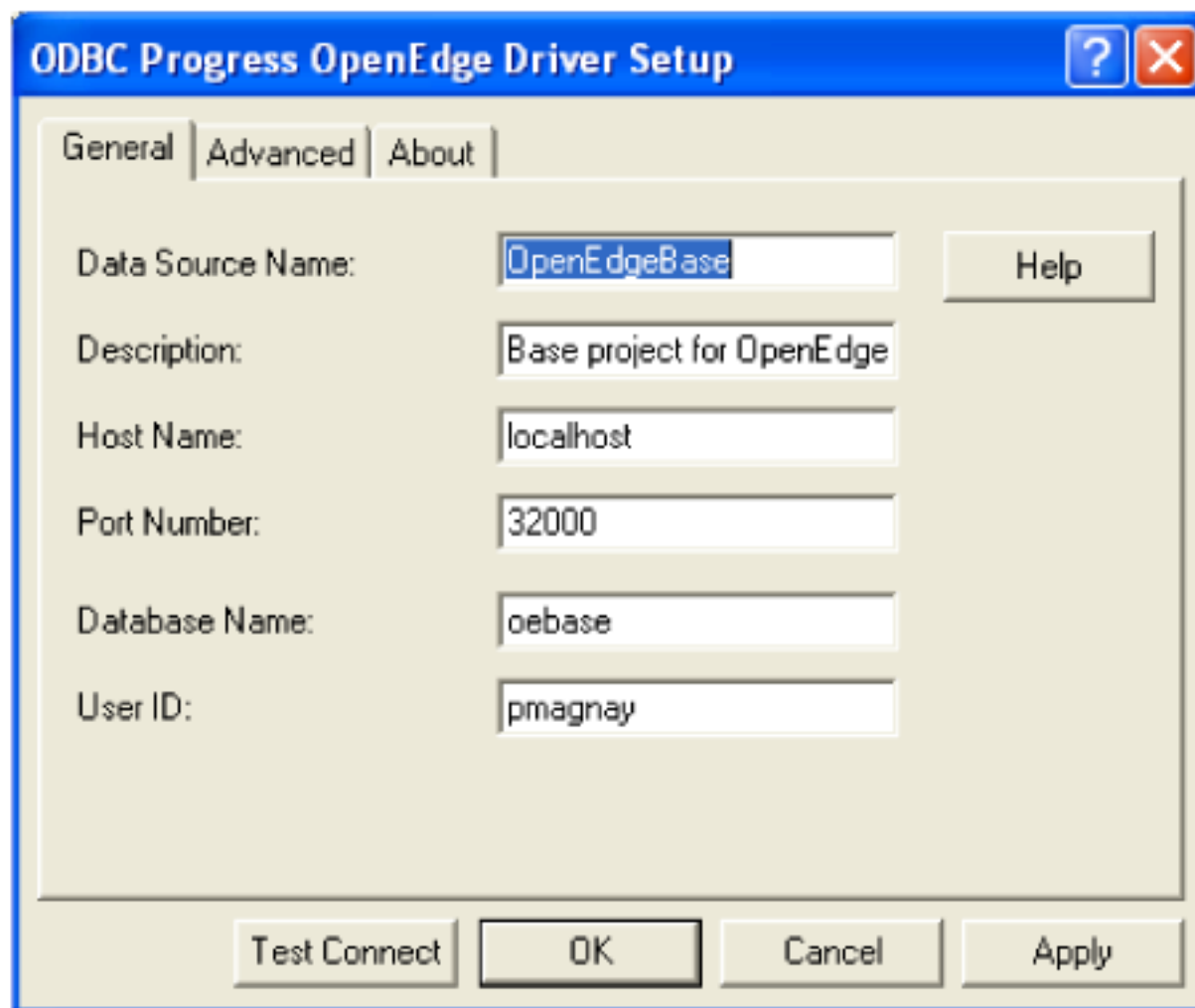
The screenshot shows the 'ODBC Progress OpenEdge Driver Setup' dialog box. It has a title bar with a question mark and a close button. Below the title bar are three tabs: 'General', 'Advanced', and 'About'. The 'General' tab is selected. The dialog contains the following fields and buttons:

- Data Source Name: [Text Input Field] [Help Button]
- Description: [Text Input Field]
- Host Name: [Text Input Field]
- Port Number: [Text Input Field]
- Database Name: [Text Input Field]
- User ID: [Text Input Field]
- Buttons at the bottom: Test Connect, OK, Cancel, Apply

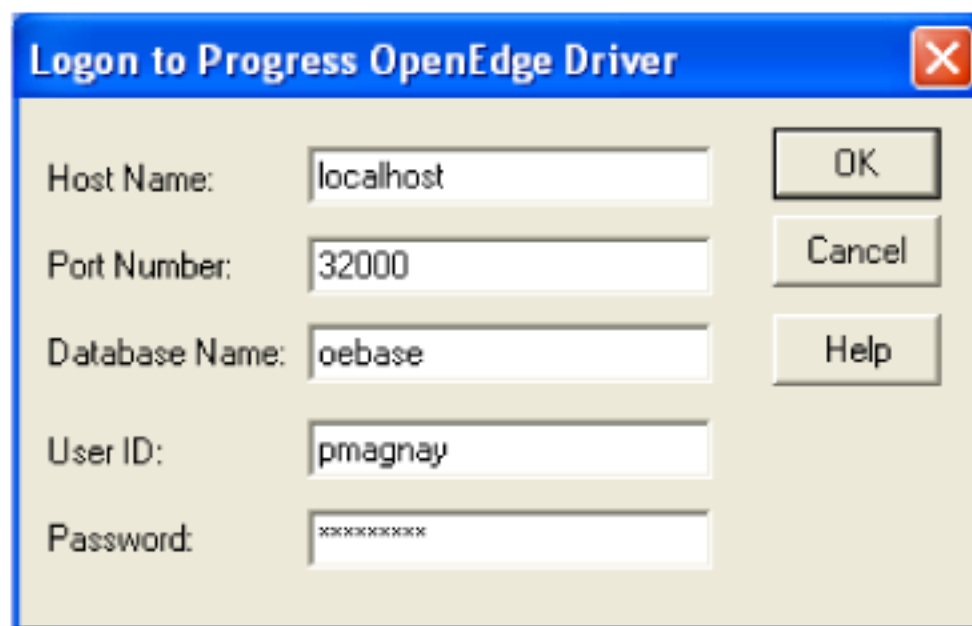
4. Select the **Finish** button

5. Enter the following:

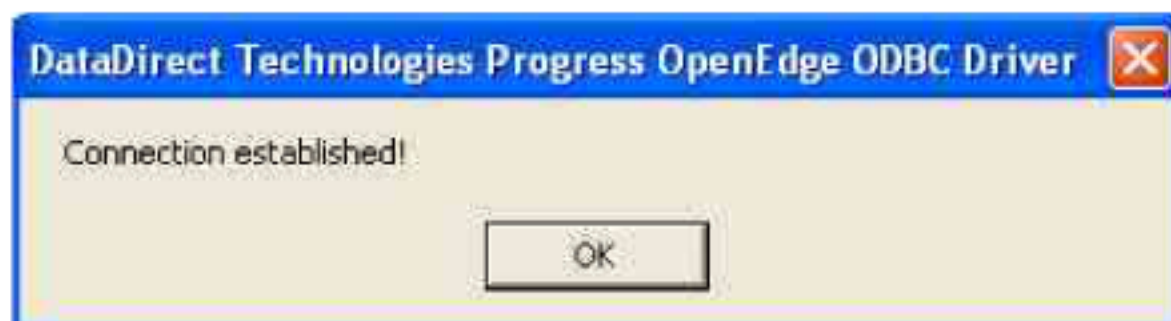
- a. Data Source Name: **OpenEdgeBase**
- b. Description: **Base project for OpenEdge model repository**
- c. Host Name: **localhost**
- d. Port Number: **32000** (or whatever the -S startup parameter was changed to)
- e. Database Name: **oebase**
- f. User ID: **pmagnay**



6. Select the **Test Connect** button

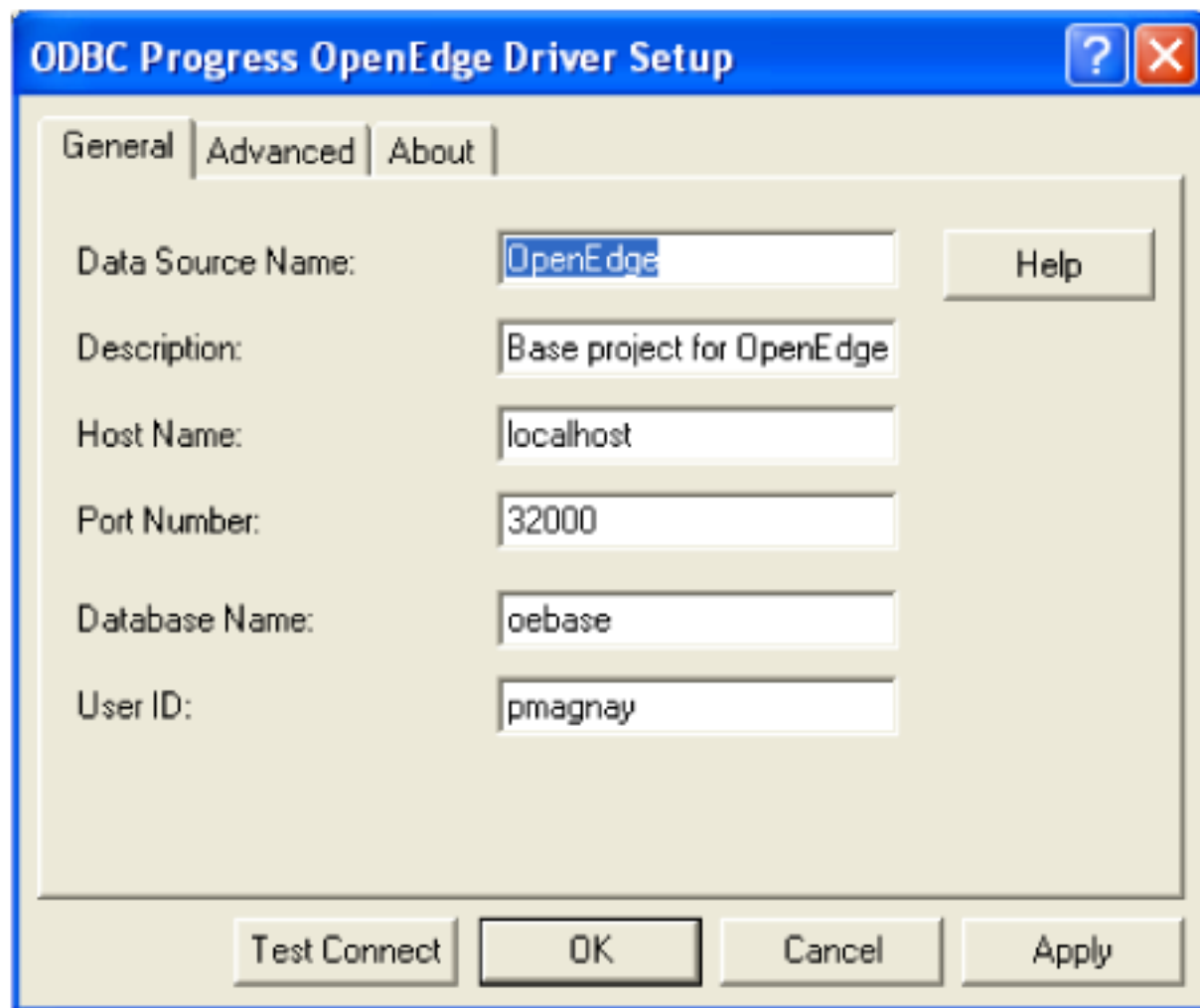


7. When prompted for a password, enter **Password1** and select the **OK button**. A **Connection Established!** message should be displayed. If this message is **not** displayed then trace the previous steps.

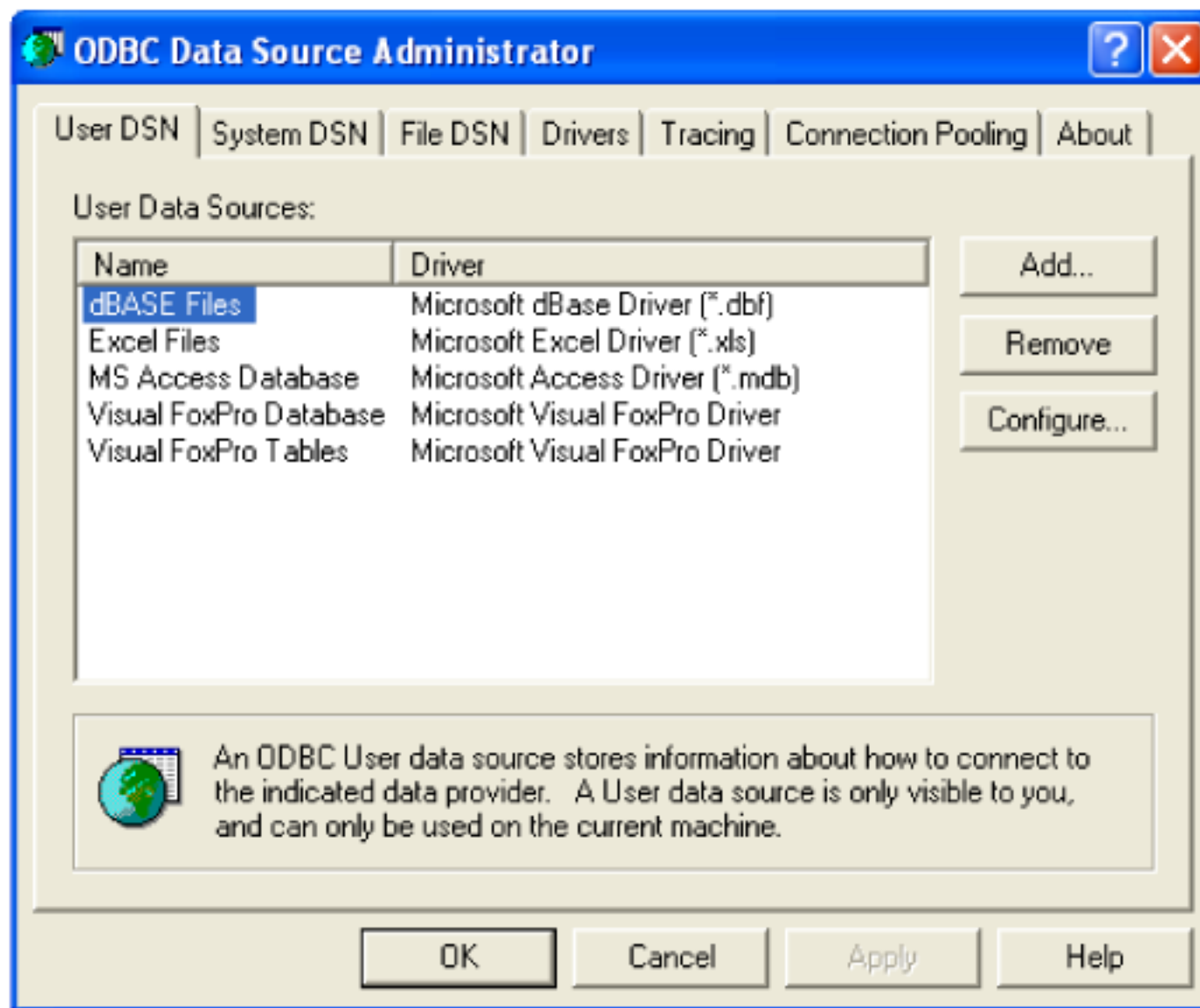


8. Acknowledge this message by selecting the **OK** button.

9. Select **OK** in the **ODBC Progress OpenEdge Driver Setup** dialog



10. Select **OK** in the **ODBC Data Source Administrator** dialog

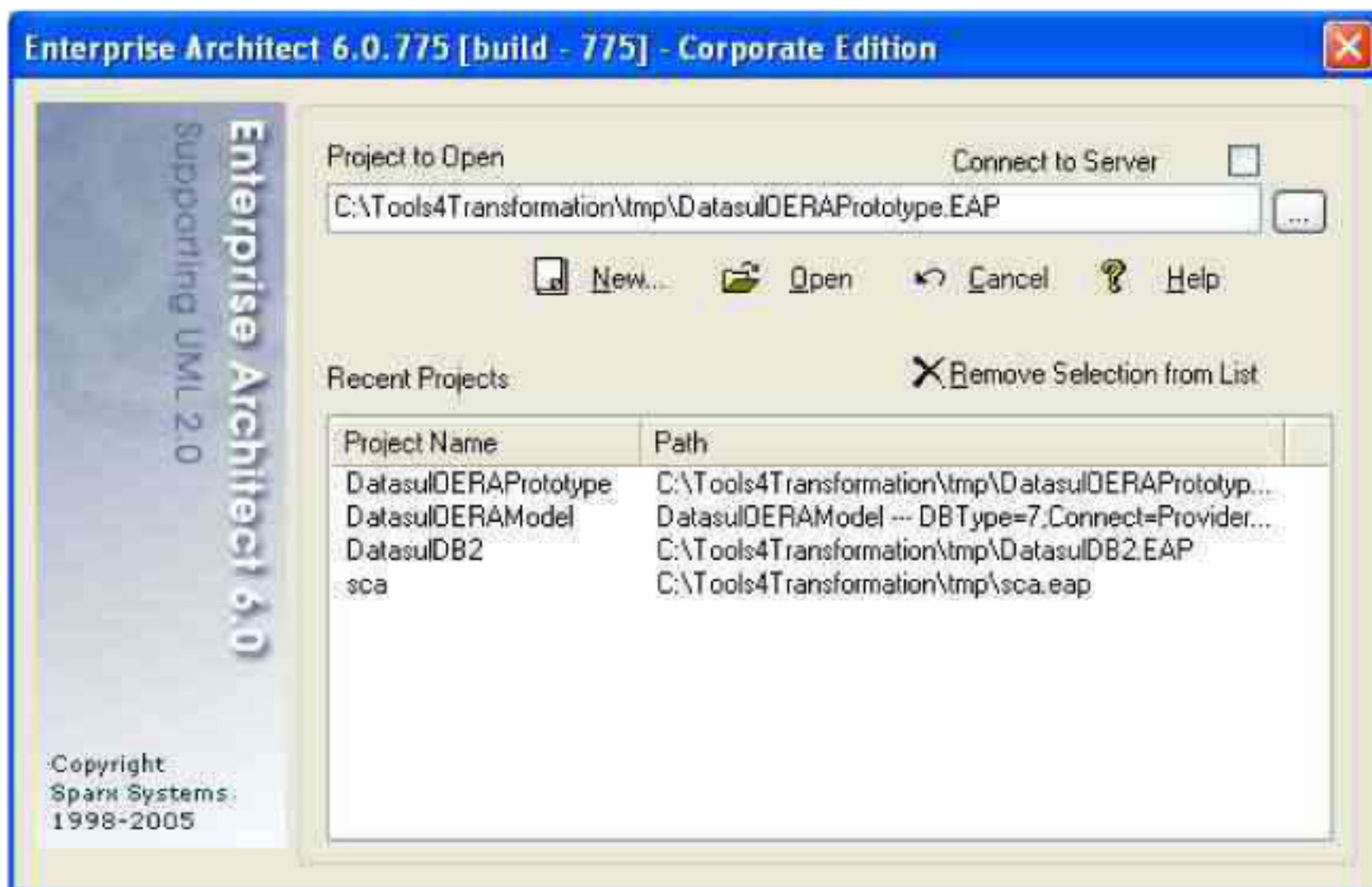


11. The ODBC Data Source to the oebase database is now configured.

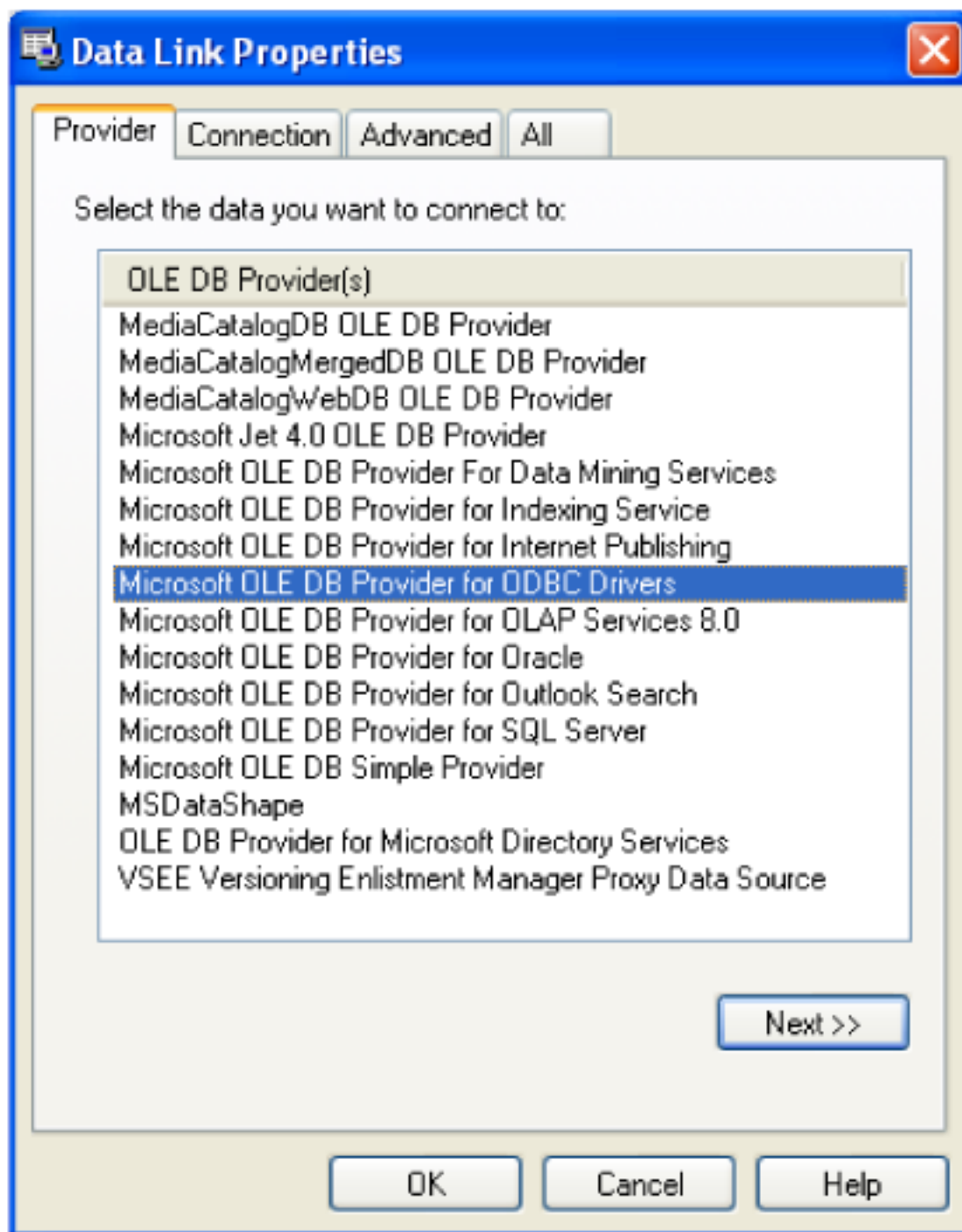
Repeat the above steps 1 through 12 for the oeexample database exchanging “oebase” for “oeexample” where applicable.

Connecting to the OpenEdge Database from Enterprise Architect

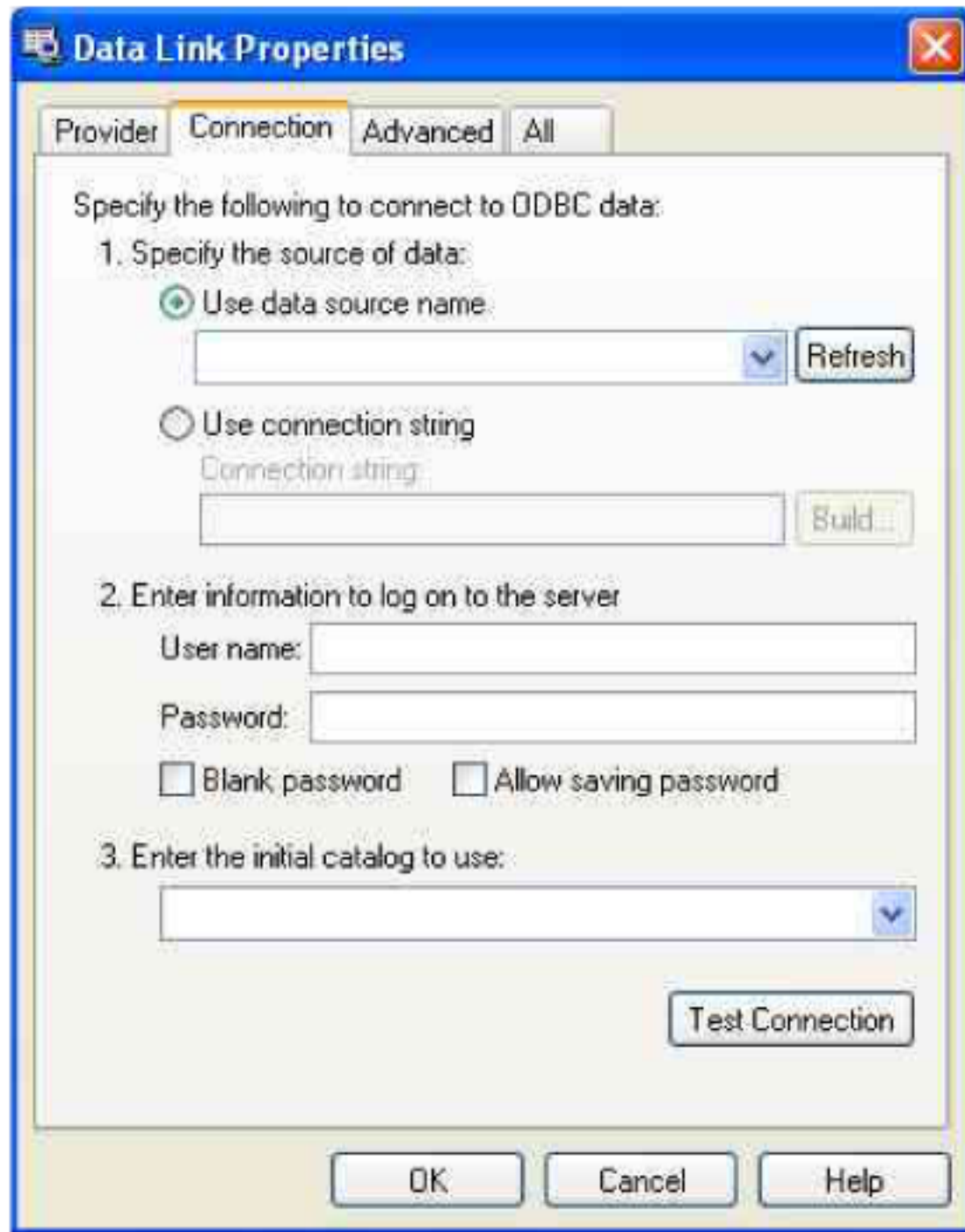
1. Start Enterprise Architect
2. Select the **File -> Open Project...** menu option



3. Check the **Connect to Server** checkbox then select the ... button to the immediately to the right of the **Project to Open** textbox.

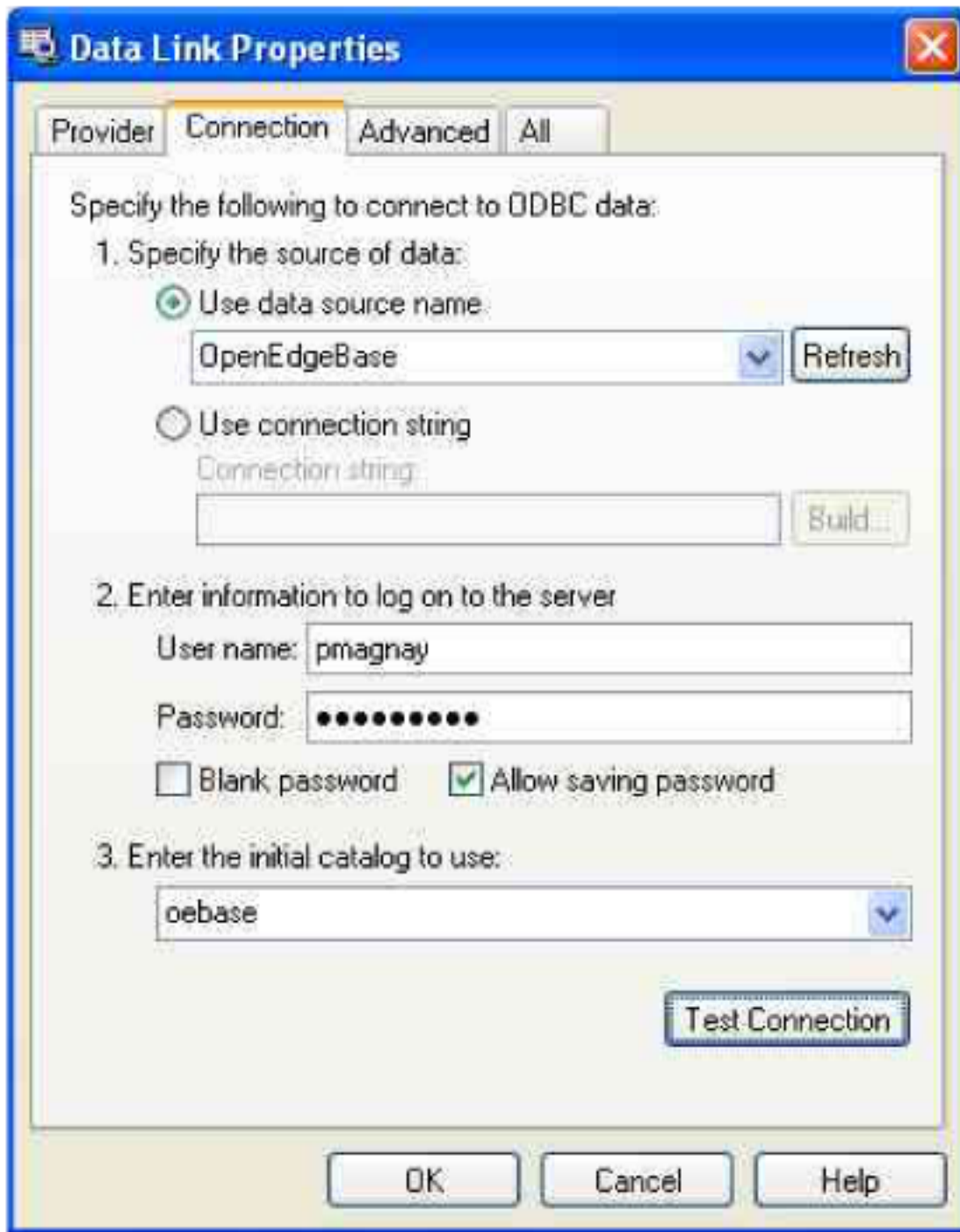


4. Select **Microsoft OLE DB Provider for ODBC Drivers** list item then select the **Next** button



5. Select/Enter the following details into the **Data Link Properties** dialog

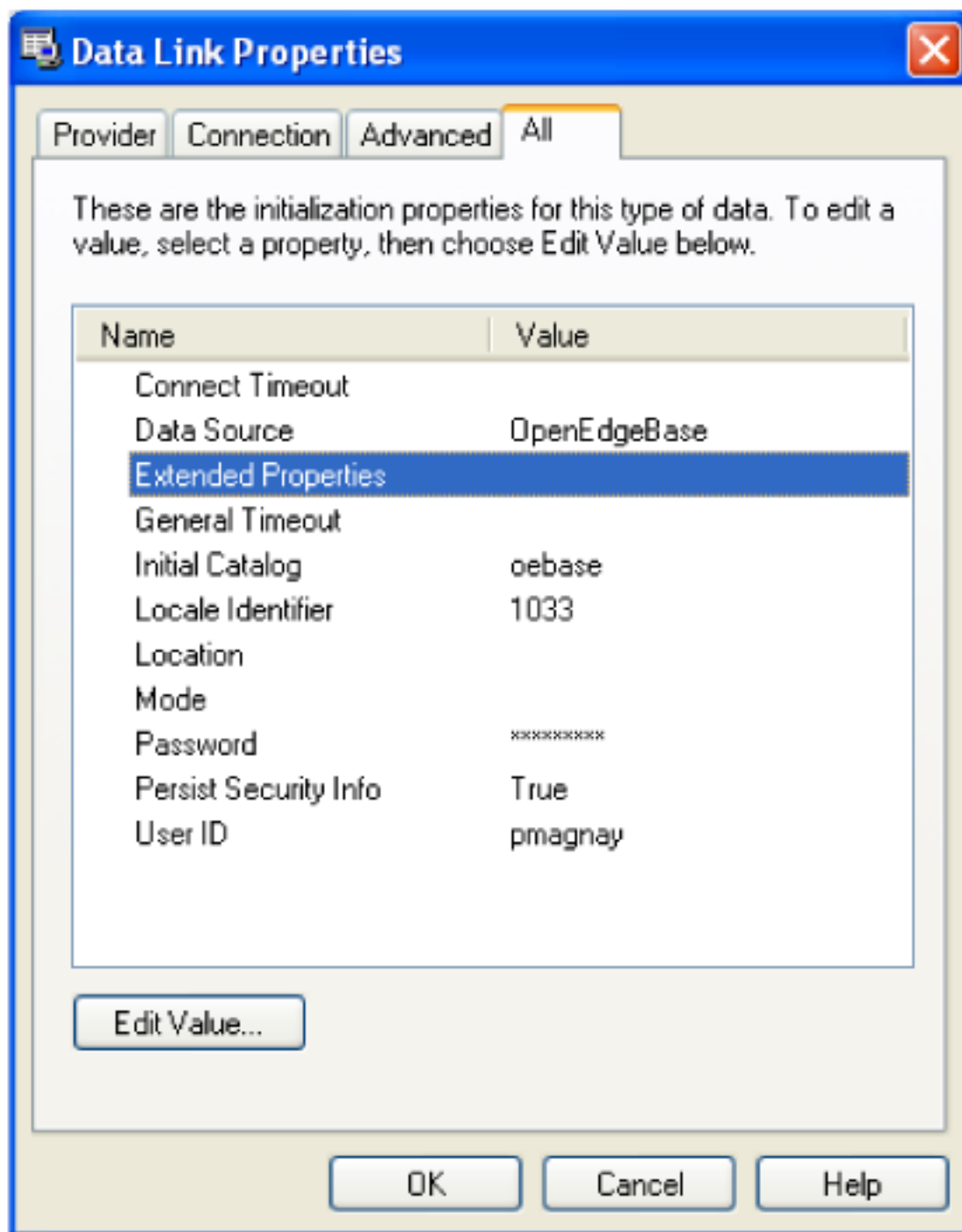
- a. 1. Specify the source of data:
 - i. Use data source name: **OpenEdgeBase**
- b. 2. Enter information to log on to the server
 - i. User name: **pmagnay**
 - ii. Password: **Password1**
 - iii. Blank password: **<leave unchecked>**
 - iv. Allow saving password: **<check>**
- c. 3. Enter the initial catalog to use:
 - i. Enter **“oebase”**



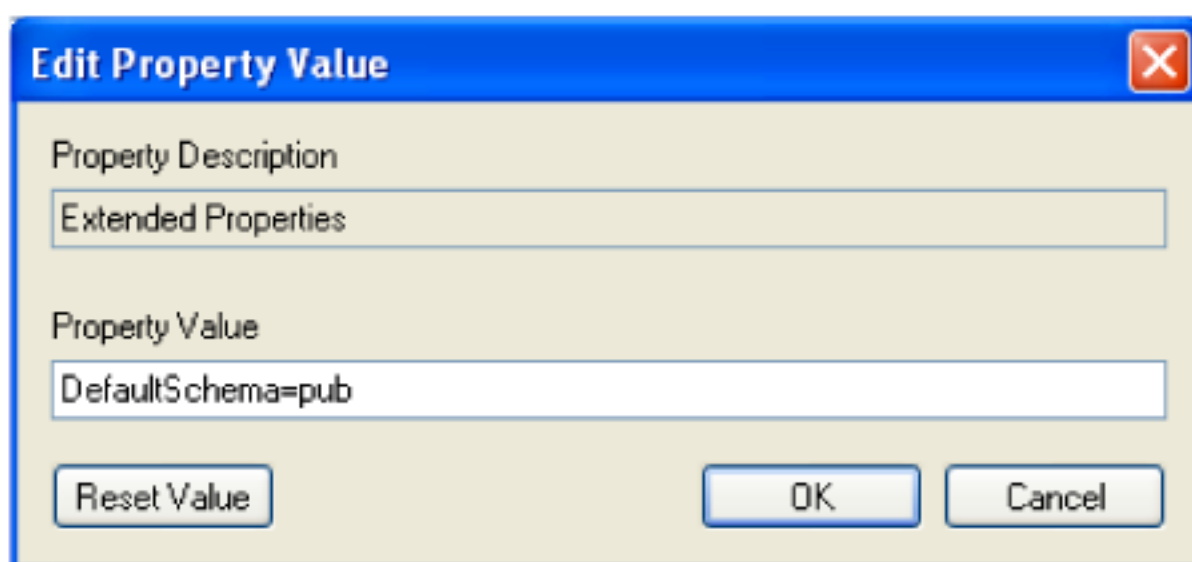
6. Select the **Test Connection** button and a **Test connection succeeded** message should be displayed.



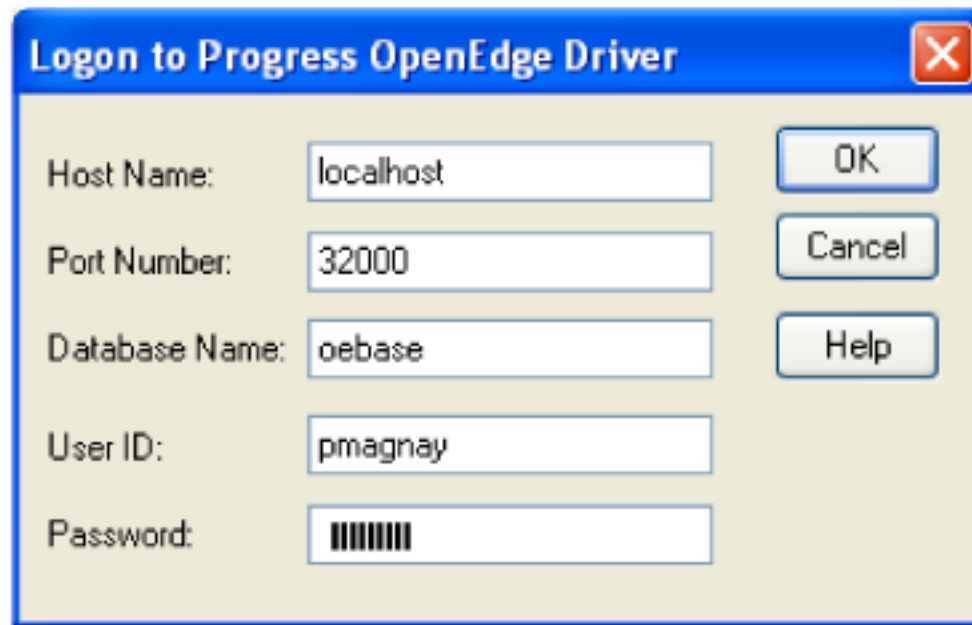
7. Select the **OK** button in the message box to acknowledge the message.
8. Select the **All** tab option in the **Data Link Properties** dialog



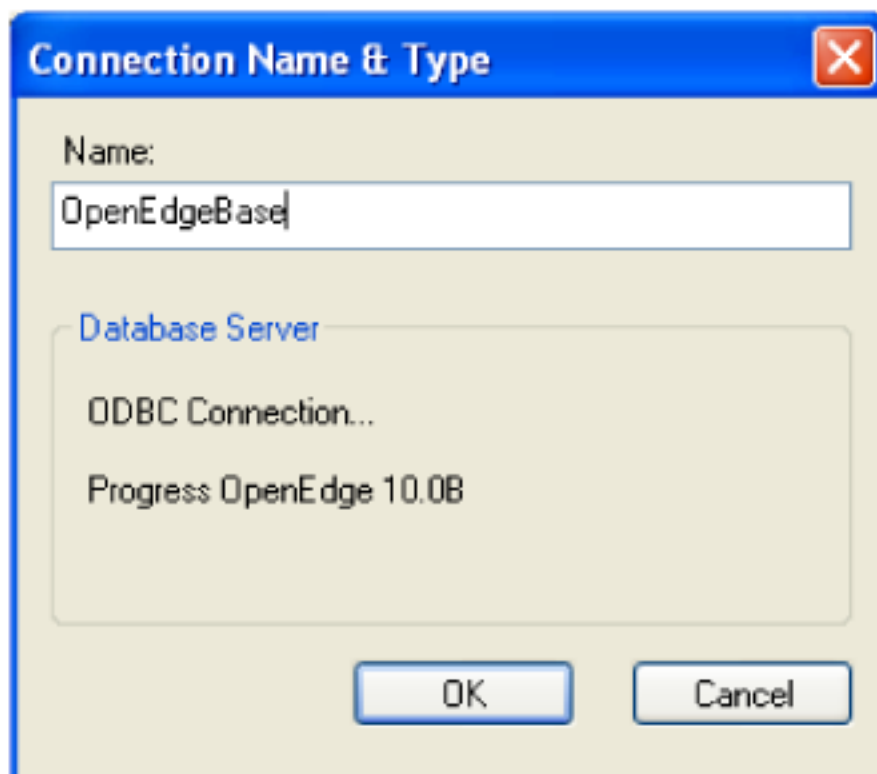
9. Select the **Extended Properties** list item then select the **Edit Value...** button
10. Enter **“DefaultSchema=pub”** into the **Property Value** textbox



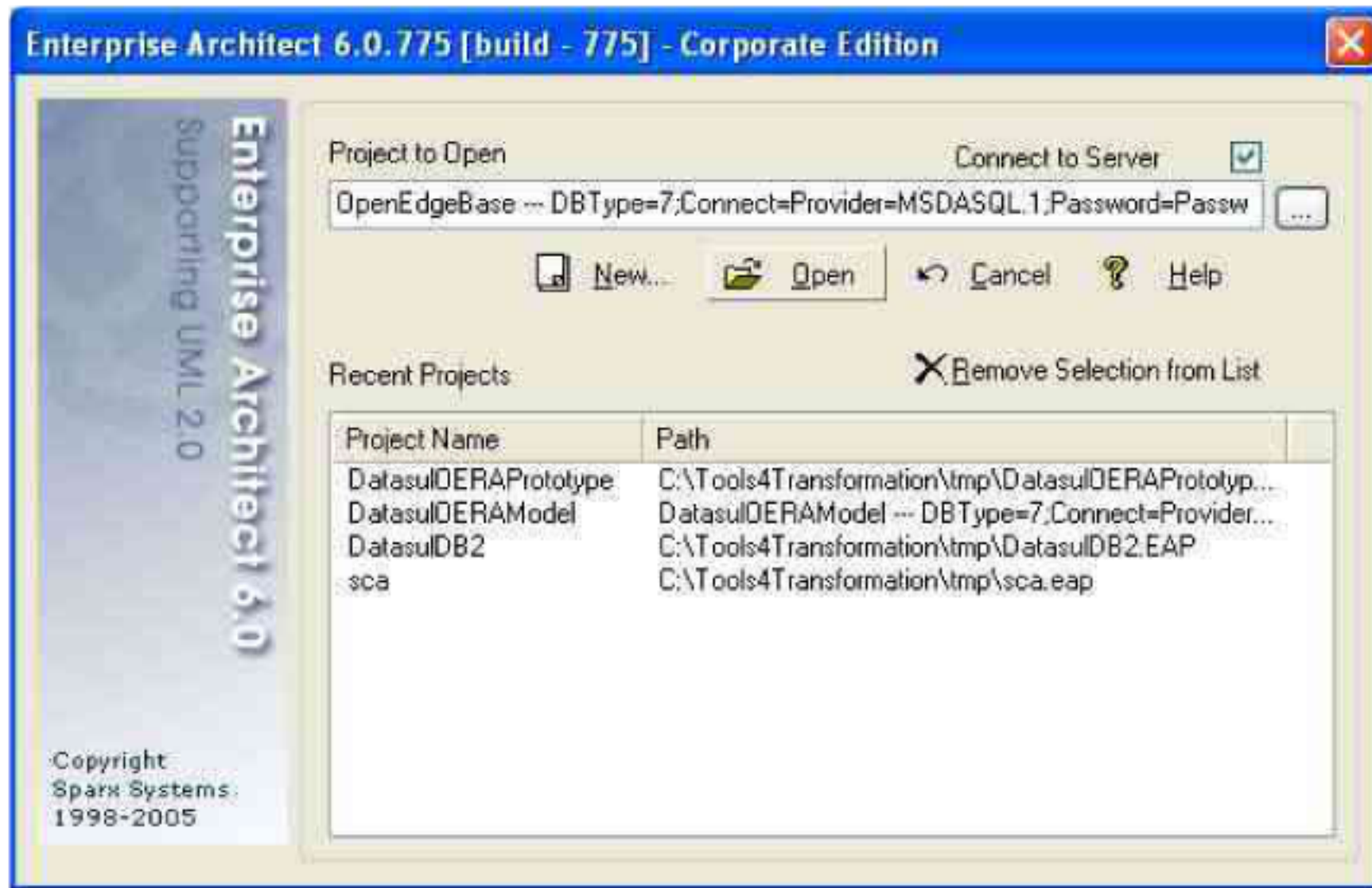
11. Select the **OK** button on the **Edit Property Value** dialog
12. Select the **OK** button on the **Data Link Properties** dialog
13. When prompted for the a logon password, enter **“Password1”** into the **Password** textbox



14. Enter a connection name of “**OpenEdge**” into the **Name** textbox in the **Connection Name & Type** dialog



15. Select the **Open** button in the **Enterprise Architect Open Project** dialog (directly below the **Project to Open** textbox)



16. A base EA project should appear in the **Project View** window.

Repeat these steps to create a data source for the OEEExample database changing the name where necessary. Also remember to change the port number.

(Presently, some diagrams in the OEEExample model repository do not display correctly due to string size limitations. This issue will be corrected in subsequent releases.)

Creating you own Enterprise Architect model repository using the OpenEdge 10 database

1. Use **procopy** the oebase.db database
2. Create startup and shutdown scripts for the new database the start the database server.
3. Create the ODBC data source as per the steps above changing names and port numbers where necessary.
4. Open the new model repository database in Enterprise Architect as per the steps above.

